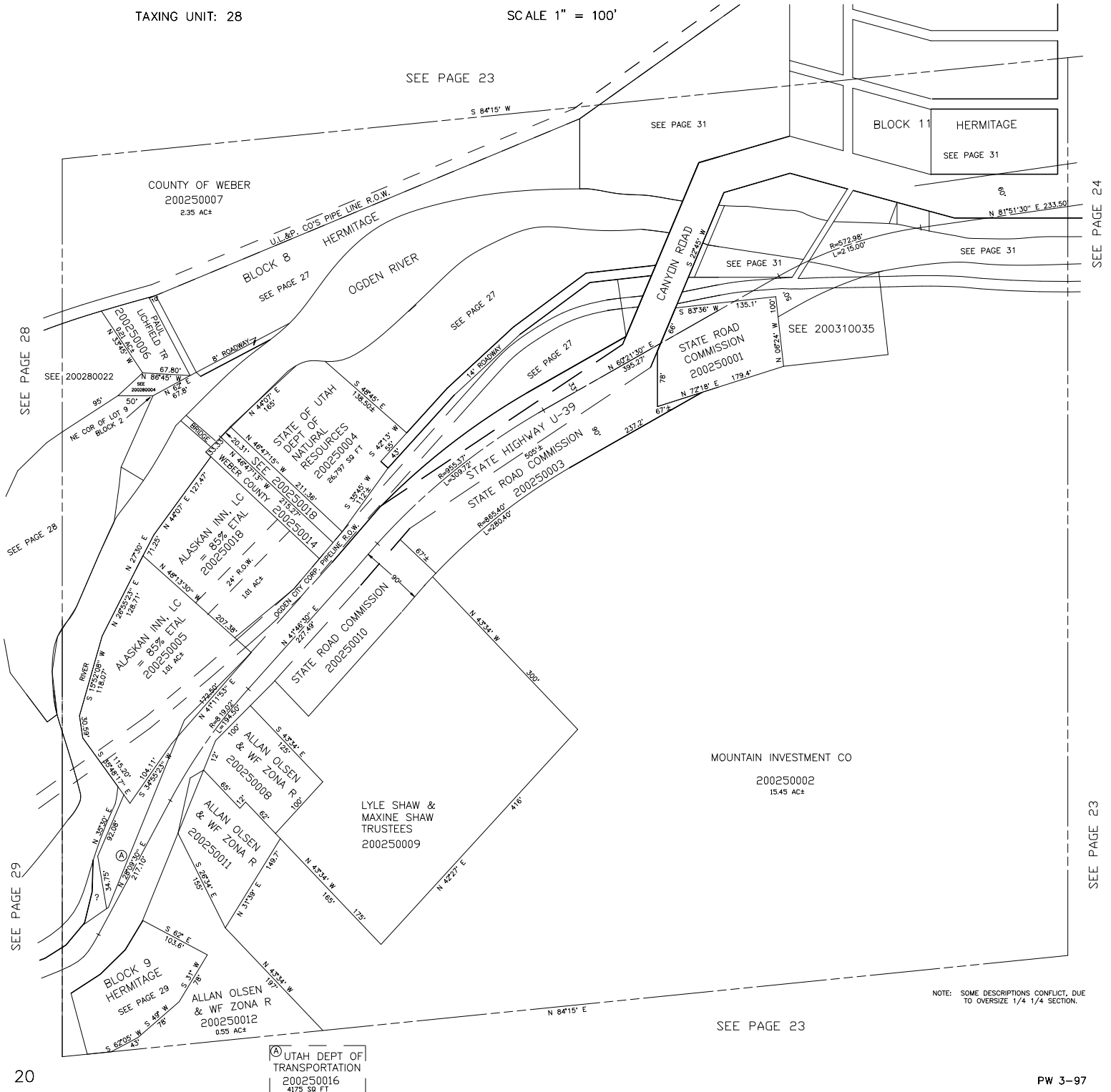


S.W. 1/4 OF S.E. 1/4
SECTION 18, T.6N., R.1E., S.L.B. & M.

EDEN & HUNTSVILLE DISTRICTS

TAXING UNIT: 28

SCALE 1" = 100'



SEE PAGE 28

SEE PAGE 28

SEE PAGE 29

20

SEE PAGE 23

SEE PAGE 31

BLOCK 11 HERMITAGE
SEE PAGE 31

SEE PAGE 31

SEE PAGE 31

STATE ROAD COMMISSION
200250001
SEE 200310035

COUNTY OF WEBER
200250007
2.35 AC±

BLOCK 8
SEE PAGE 27

OGDEN RIVER

SEE PAGE 27

SEE PAGE 27

SEE PAGE 27

SEE PAGE 27

SEE PAGE 27

SEE PAGE 27

SEE PAGE 27

SEE PAGE 27

SEE PAGE 27

SEE PAGE 27

SEE PAGE 27

SEE PAGE 27

SEE PAGE 27

SEE PAGE 27

SEE PAGE 27

MOUNTAIN INVESTMENT CO
200250002
15.45 AC±

LYLE SHAW &
MAXINE SHAW
TRUSTEES
200250009

ALLAN OLSEN
& WF ZONA R
200250011

ALLAN OLSEN
& WF ZONA R
200250012

ALLAN OLSEN
& WF ZONA R
200250016

ALLAN OLSEN
& WF ZONA R
200250018

ALLAN OLSEN
& WF ZONA R
200250019

ALLAN OLSEN
& WF ZONA R
200250020

ALLAN OLSEN
& WF ZONA R
200250021

ALLAN OLSEN
& WF ZONA R
200250022

ALLAN OLSEN
& WF ZONA R
200250023

UTAH DEPT OF
TRANSPORTATION
200250016
4175 SQ FT

NOTE: SOME DESCRIPTIONS CONFLICT, DUE
TO OVERSIZE 1/4 1/4 SECTION.

SEE PAGE 23

SEE PAGE 24

SEE PAGE 23